

FOR SALE

LOTS AVAILABLE FOR SALE

DENVER, COLORADO

COMMERCIAL/RETAIL
AND BUSINESS PARK
SITES AVAILABLE



FOR MORE INFORMATION
PLEASE CONTACT

Jim Bolt

T 720.528.6310

james.bolt@cbre.com



CB RICHARD ELLIS

8390 East Crescent Parkway
Suite 300

Greenwood Village, CO 80111

T 720.528.6300

F 720.528.6333

www.cbre.com/denver

Tim D'Angelo

D 303.991.3822

C 303.875.4288

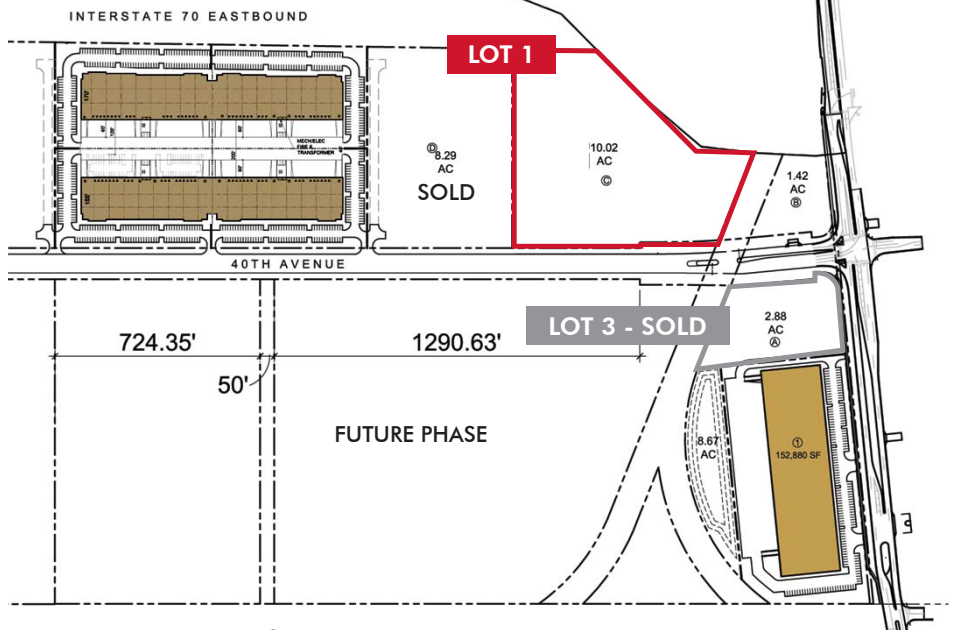
tim@ringsbyrealty.com



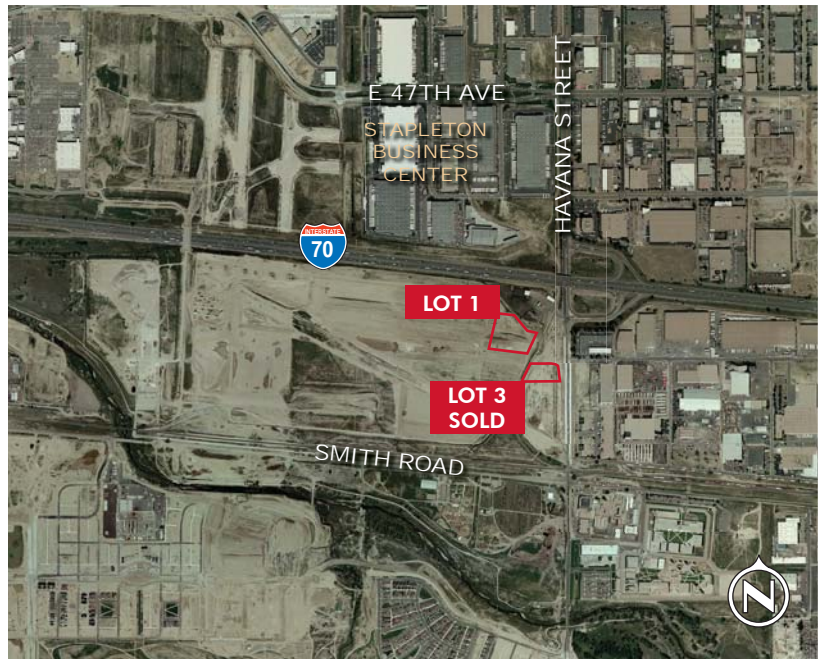
1123 Auraria Pkwy, Suite 200

Denver, CO 80204

www.ringsbyrealty.com



- :: Immediate access from Havana to I-70
- :: Excellent identity with Havana Street and I-70 frontage
- :: Entry parcels to new 100 acre business park being developed by Forest City
- :: Close proximity to 1.2 million SF of new retail at Northfield at Stapleton
- :: Ideal professional setting for service companies desiring an infill central site
- :: Zoned CMU-30 allowing for retail, office and industrial uses
- :: 10.2 Acre Lot 1 available at \$6.75/SF with I-70 frontage



© 2010 CB Richard Ellis, Inc. This information has been obtained from sources believed reliable. We have not verified it and make no guarantee, warranty or representation about it. Any projections, opinions, assumptions or estimates used are for example only and do not represent the current or future performance of the property. You and your advisors should conduct a careful, independent investigation of the property to determine to your satisfaction the suitability of the property for your needs.